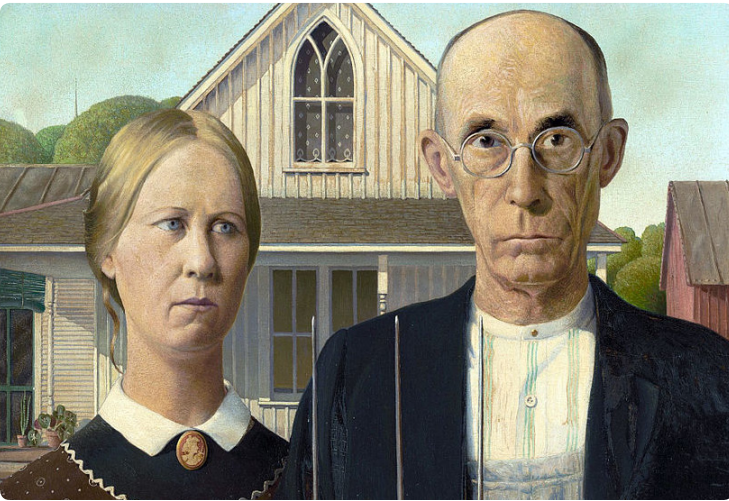


# BALANCE



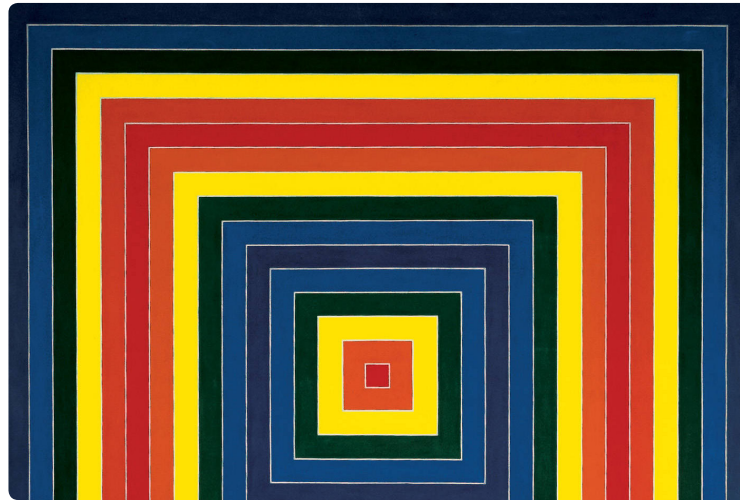
#1 | Grant Wood | *American Gothic* | 1930 | oil on beaver board  
78 x 65 cm | Art Institute of Chicago: Chicago, IL



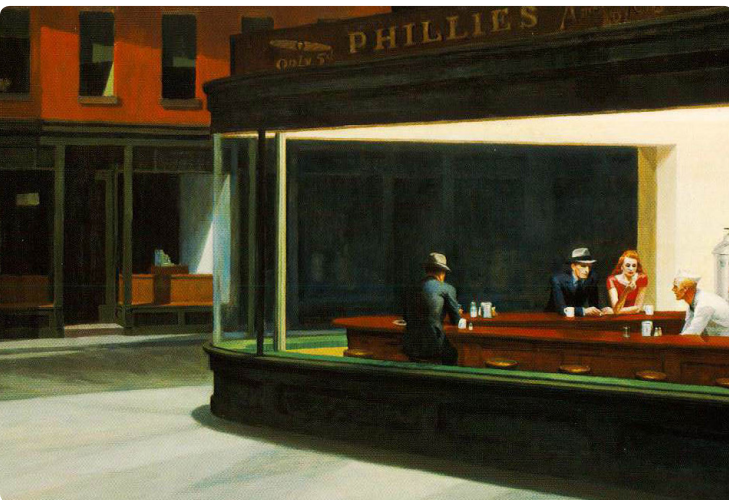
#2 | Francis Bacon | *Figure with Meat* | 1954 | oil on canvas  
130 x 122 cm | Art Institute of Chicago: Chicago, IL



#3 | African Kpelle Mask | 1875-1900 | wood  
44 x 20 x 11 cm | Detroit Institute of Arts: Detroit, MI



#4 | Frank Stella | *Gran Cairo* | 1962 | oil on canvas  
216 x 216 cm | Whitney Museum of American Art: New York, NY



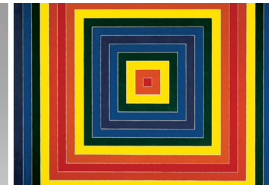
#5 | Edward Hopper | *Nighthawks* | 1942 | oil on canvas  
84 x 152 cm | Art Institute of Chicago: Chicago, IL



#6 | James McNeill Whistler | *Arrangement in Grey and Black No. I* | 1871 | oil on canvas  
144 x 162 cm | Musée d'Orsay: Paris, France



# BALANCE



## BALANCE IS

Blank space for writing the definition of balance.

## KEY TERMS

CENTRAL AXIS

Blank space for defining the central axis.

## TYPES OF BALANCE

FORMAL BALANCE

—SYMMETRY

—RADIAL BALANCE

INFORMAL BALANCE (ASYMMETRY)

Blank space for defining formal balance.

## VISUAL WEIGHT (HIERARCHY)

SIZE

COLOR

POSITION

DETAIL

Blank space for defining visual weight.