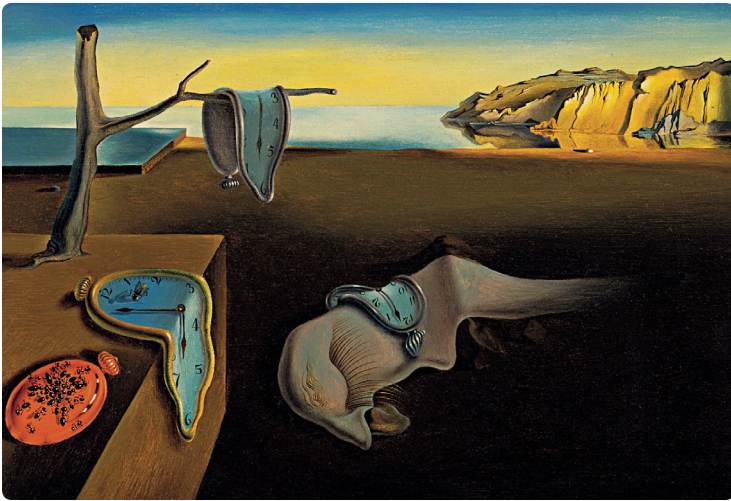


# SALVADOR DALÍ



#1 | *The Persistence of Memory* | 1931 | oil on canvas  
24 x 33 cm | Museum of Modern Art: New York, NY



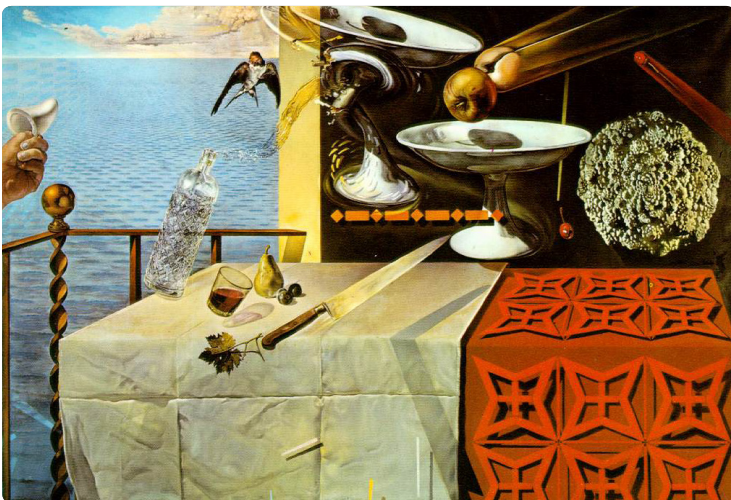
#2 | *Autumn Cannibalism* | 1936 | oil on canvas  
65 x 65 cm | Tate Collection: London, United Kingdom



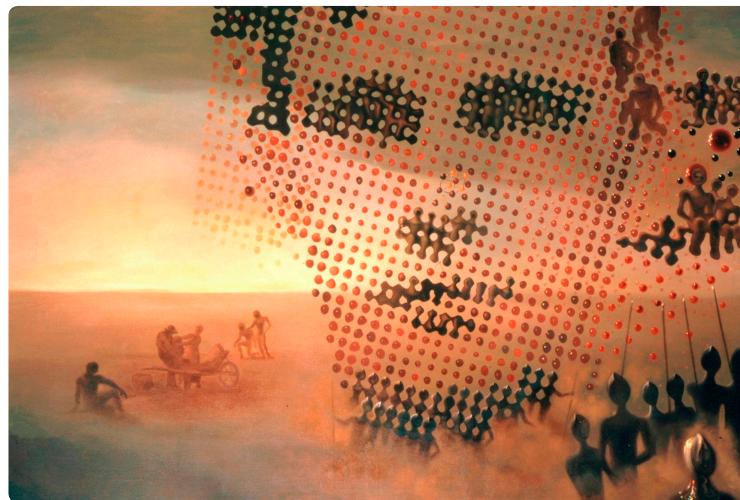
#3 | *Swans Reflecting Elephants* | 1937 | oil on canvas  
51 x 77 cm | Private Collection



#4 | *Galatea of the Spheres* | 1952 | oil on canvas  
65 x 54 cm | Dalí Theatre and Museum: Figueres, Spain



#5 | *Still Life - Fast Moving* | 1956 | oil on canvas  
126 cm x 160 cm | Salvador Dalí Museum: St. Petersburg, FL



#6 | *Portrait of my Dead Brother* | 1963 | oil on canvas  
69 cm x 69 cm | Salvador Dalí Museum: St. Petersburg, FL





# SALVADOR DALÍ



## FAST FACTS

LIFE:

LOCATION:

MOVEMENT:

IMPACT:

INTERESTING:

ARTISTIC CHARACTERISTICS:

## NOTEWORTHY