



ANCIENT EGYPT



#1 | The Seated Scribe (from Saqqara, Egypt)
2620–2500 BC | limestone, paint | 54 cm high
Louvre: Paris France



#2 | Great Pyramids (Mankaure, Khafre, Khufu)
2551–2472 BC | limestone | Khufu: 73 m base, 137 m high
Giza, Egypt



#3 | Great Sphinx
2520–2494 BC | sandstone | 73 m long, 20 m high
Giza, Egypt



#4 | Harvesting Scene (from Unsu's tomb in Thebes, Egypt)
1479–1475 BC | paint and pigment on plaster | 68 x 94 cm
Louvre: Paris France



#5 | Fowling Scene (from Nebamon's tomb in Thebes, Egypt)
1350 BC | fresco | 98 x 115 cm
British Museum: London, United Kingdom



#6 | Bust of Queen Nefertiti (from Amarna, Egypt)
1340 BC | limestone, gypsum, crystal and wax | 50 cm high
Egyptian Museum: Berlin, Germany



#7 | Mask of Tutankhamun (from his tomb in Thebes, Egypt)
1323 BC | gold with semiprecious stones | 53 cm high
Egyptian Museum: Cairo, Egypt



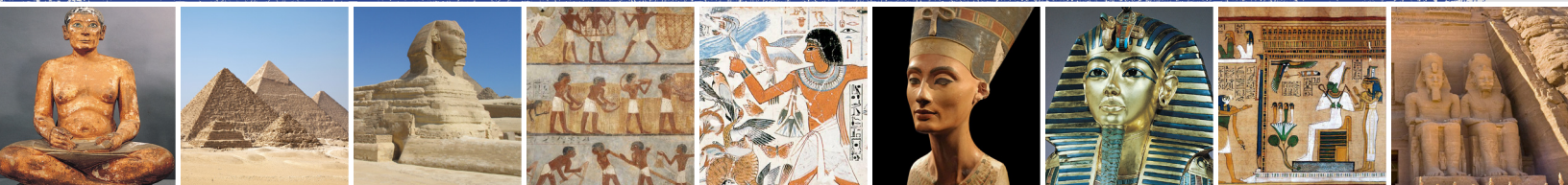
#8 | Book of the Dead of Hunefer (from his tomb in Thebes)
1275 BC | painted papyrus scroll | 39 cm high
British Museum: London, United Kingdom



#9 | Temple of Ramses II
1290–1224 BC | sandstone | colossi: 20 m high
Abu Simbel, Egypt



ANCIENT EGYPT



FAST FACTS

DATES & LOCATION:

IDEAS:

BACKGROUND:

ARTISTIC CHARACTERISTICS:

NOTEWORTHY