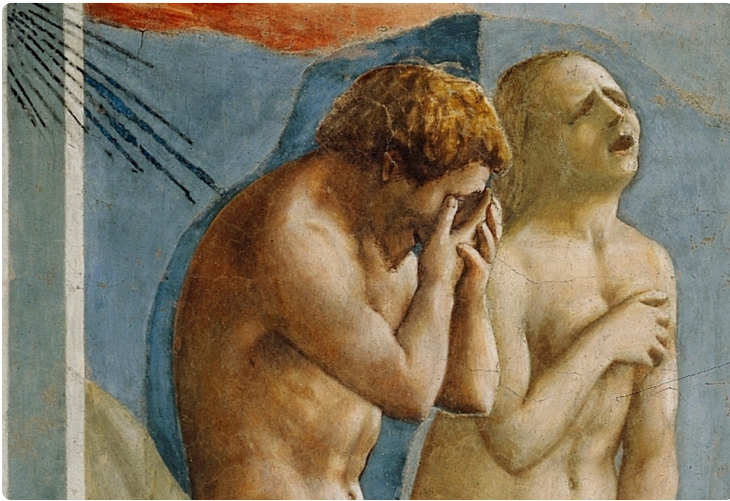
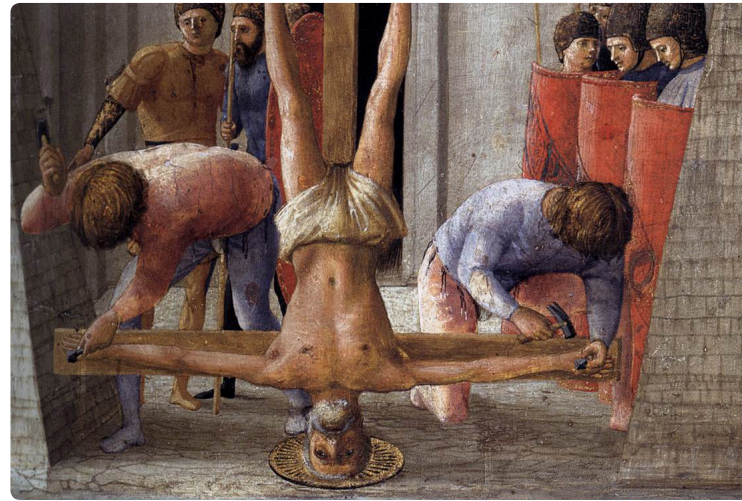


MASACCIO

CASSAI



#1 | *Expulsion from the Garden of Eden* | 1425 | fresco
208 x 88 cm | Brancacci Chapel: Florence, Italy



#2 | *Crucifixion of St. Peter* | 1426 | tempera on panel
22 x 31 cm | Staatliche Museen: Berlin, Germany



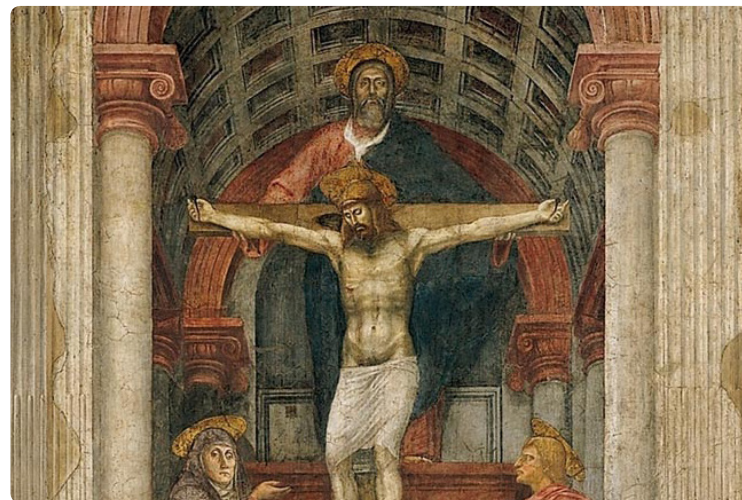
#3 | *The Adoration of the Magi* | 1426 | tempera on panel
21 x 61 cm | Staatliche Museen: Berlin, Germany



#4 | *The Virgin and Child* | 1426 | tempera on panel
135.5 x 73 cm | National Gallery: London, United Kingdom



#5 | *The Tribute Money* | 1427 | fresco
255 x 598 cm | Brancacci Chapel, Santa Maria del Carmine: Florence, Italy



#6 | *The Trinity* | 1428 | fresco
667 x 317 cm | Santa Maria Novella: Florence, Italy



MASACCIO

CASSAI



FAST FACTS

LIFE:

LOCATION:

MOVEMENT:

IMPACT:

INTERESTING:

ARTISTIC CHARACTERISTICS:

NOTEWORTHY