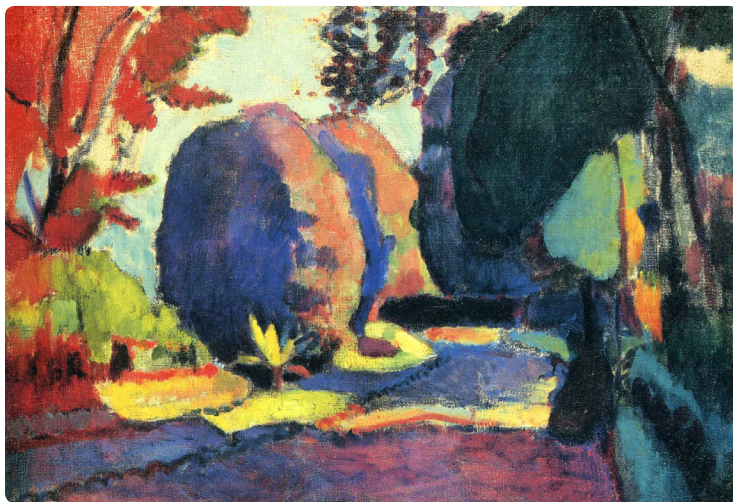
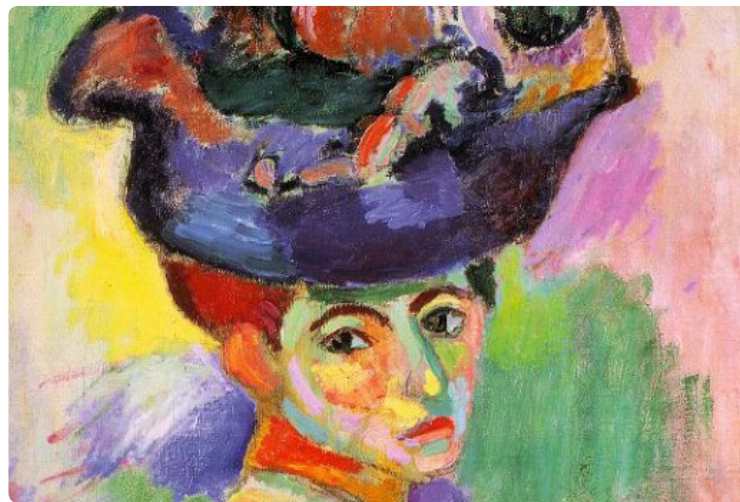


HENRI MATISSE



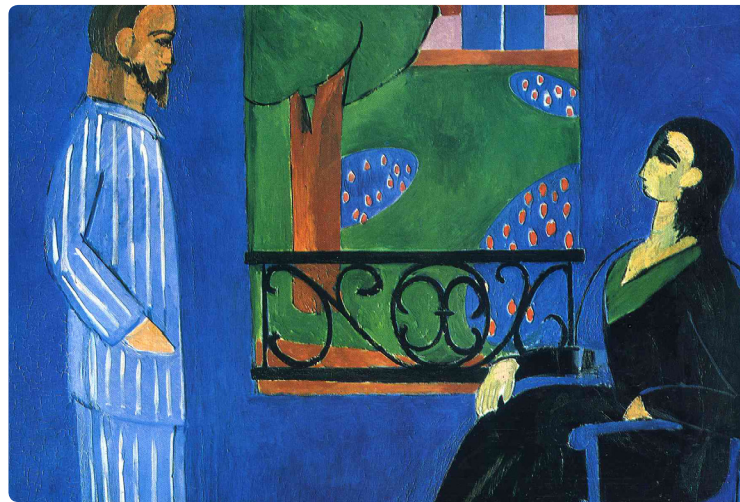
#1 | *The Luxembourg Garden* | 1901 | oil on canvas
59 x 81 cm | Hermitage Museum: St. Petersburg, Russia



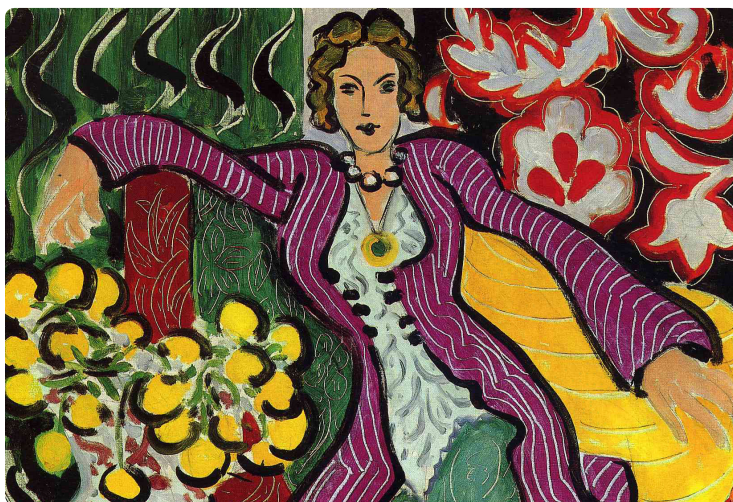
#2 | *Woman with a Hat* | 1905 | oil on canvas
81 x 60 cm | SFMOMA: San Francisco, CA



#3 | *Harmony in Red* | 1908 | oil on canvas
180 x 220 cm | Hermitage Museum: St. Petersburg, Russia



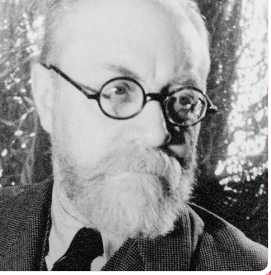
#4 | *Conversation* | 1909-12 | oil on canvas
177 x 217 cm | Hermitage Museum: St. Petersburg, Russia



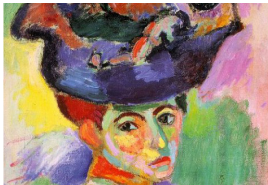
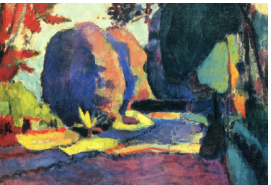
#5 | *Woman in a Purple Coat* | 1937 | oil on canvas
81 x 65 cm | Museum of Fine Arts: Houston, TX



#6 | *Blue Nude II* | 1952 | gouache painted paper on paper
116 x 89 cm | Musée National d'Art Moderne: Paris, France



HENRI MATISSE



FAST FACTS

LIFE:

LOCATION:

MOVEMENT:

IMPACT:

INTERESTING:

ARTISTIC CHARACTERISTICS:

NOTEWORTHY