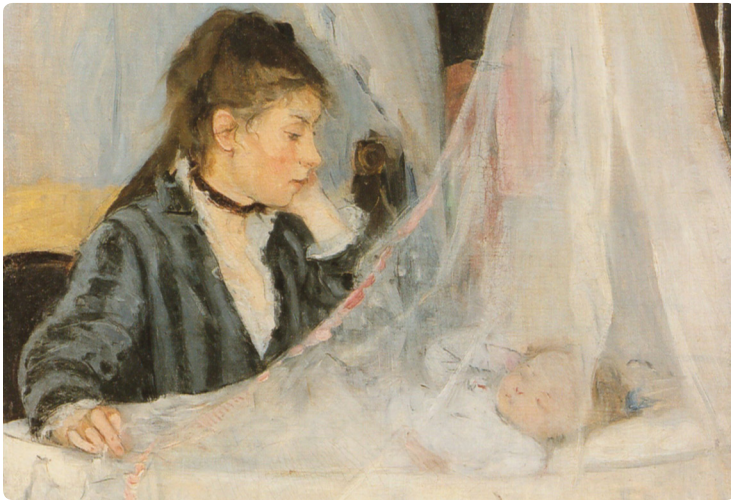
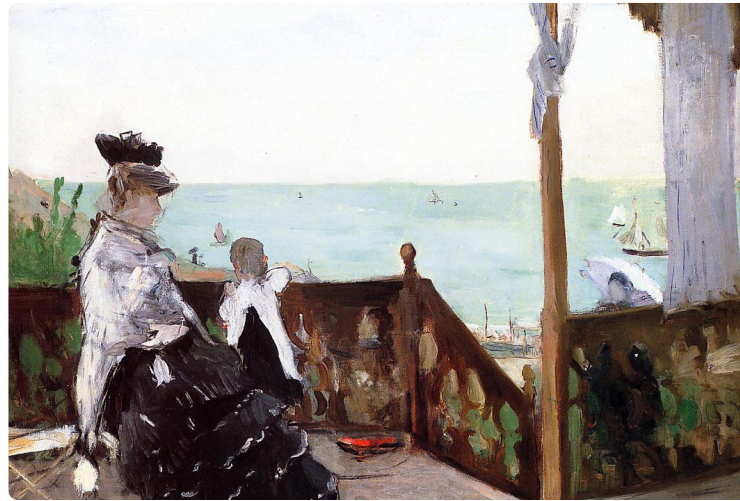




# BERTHE MORISOT



#1 | *The Cradle* | 1872 | oil on canvas  
56 x 46 cm | Musée d'Orsay, Paris, France



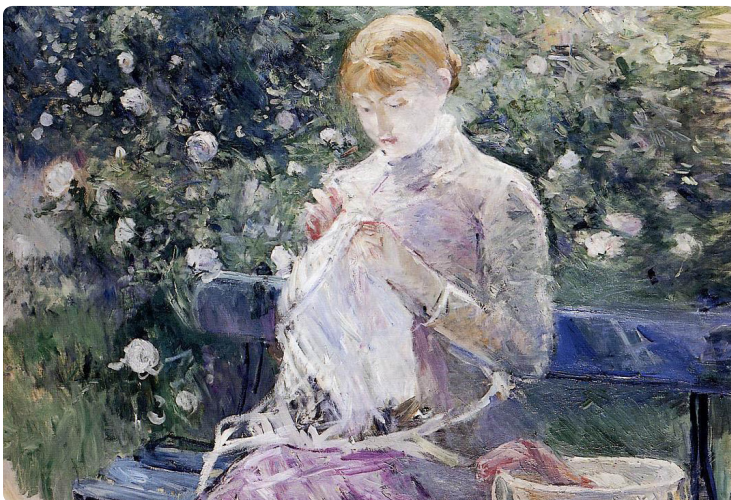
#2 | *In a Villa at the Seaside* | 1874 | oil on canvas  
50 x 61 cm | Norton Simon Museum of Art, Pasadena, CA



#3 | *Eugène Manet on the Isle of Wight* | 1875 | oil on canvas  
38 x 46 cm | Musée Marmottan Monet, Paris, France



#4 | *The Cheval-Glass* | 1879 | oil on canvas  
65 x 54 cm | Museo Thyssen-Bornemisza, Madrid, Spain



#5 | *Pisie Sewing in the Garden* | 1881 | oil on canvas  
100 x 81 cm | Musée des Beaux-Arts, Pau, France



#6 | *In the Dining Room* | 1886 | oil on canvas  
61 x 50 cm | National Gallery of Art, Washington, DC





# BERTHE MORISOT



## FAST FACTS

LIFE:

LOCATION:

MOVEMENT:

IMPACT:

INTERESTING:

ARTISTIC CHARACTERISTICS:

## NOTEWORTHY